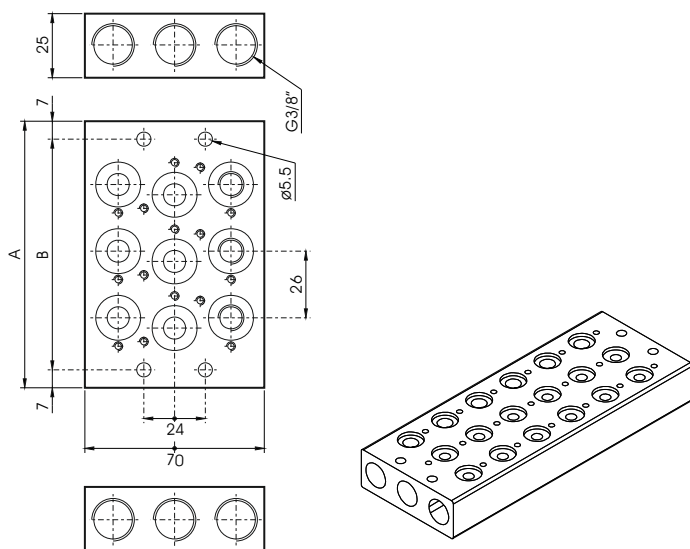


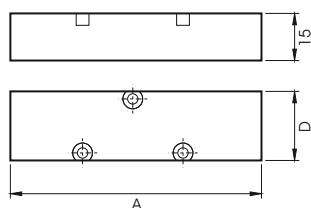
MANIFOLD FOR 1/8 VALVES
EMBASE MULTIPLE POUR VALVE 1/8
SOTTOBASE PER VALVOLE 1/8

| CODE | STATIONS | A | B |
|----------|----------|-----|-----|
| SB407202 | 2 | 72 | 58 |
| SB407203 | 3 | 96 | 82 |
| SB407204 | 4 | 120 | 106 |
| SB407205 | 5 | 144 | 130 |
| SB407206 | 6 | 168 | 154 |
| SB407207 | 7 | 192 | 178 |
| SB407208 | 8 | 216 | 202 |
| SB407209 | 9 | 240 | 226 |
| SB407210 | 10 | 264 | 250 |



MANIFOLD FOR 1/4 VALVES
EMBASE MULTIPLE POUR VALVE EN 1/4
SOTTOBASE PER VALVOLE 1/4

| CODE | STATIONS | A | B |
|----------|----------|-----|-----|
| SB407302 | 2 | 78 | 64 |
| SB407303 | 3 | 104 | 90 |
| SB407304 | 4 | 130 | 116 |
| SB407305 | 5 | 156 | 142 |
| SB407306 | 6 | 182 | 168 |
| SB407307 | 7 | 208 | 194 |
| SB407308 | 8 | 234 | 220 |
| SB407309 | 9 | 260 | 246 |
| SB407310 | 10 | 286 | 272 |



BLANKING PLATE
PLAQUE DE FERMETURE
PIASTRINA DI CHIUSURA

| CODE | | A | D |
|------------|-----|----|----|
| SB40720004 | 1/8 | 60 | 22 |
| SB40730004 | 1/4 | 70 | 25 |