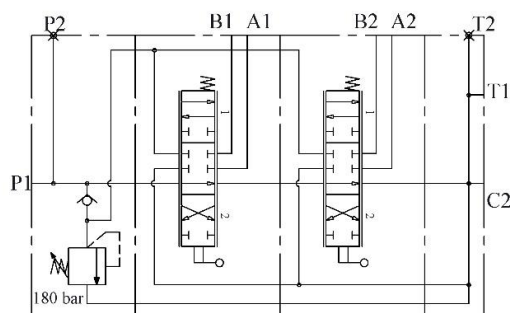
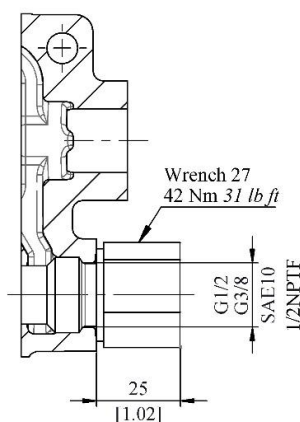


Outlet port options

It is possible to have open centre, closed centre and high pressure carry-over (power beyond)

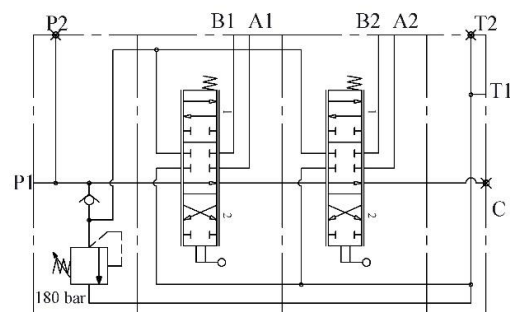
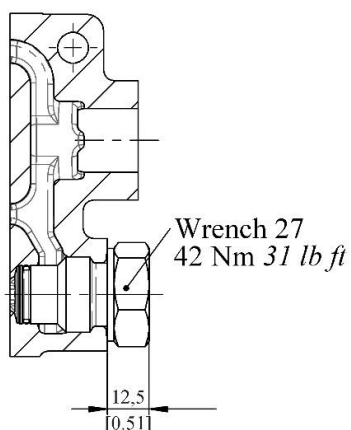
If in the order code before the thread specification port N is plugged with standard G1/2 plug

C2 - with carry-over (high pressure carry over)



Example order code 02Z50/2x(A1KZ1)-C2-G

C – closed center



Example order code: 02Z50/2x(A1KZ1)-C-G

C2D - Direct high pressure carry-over

